

**EXPLODED PARTS VIEW**

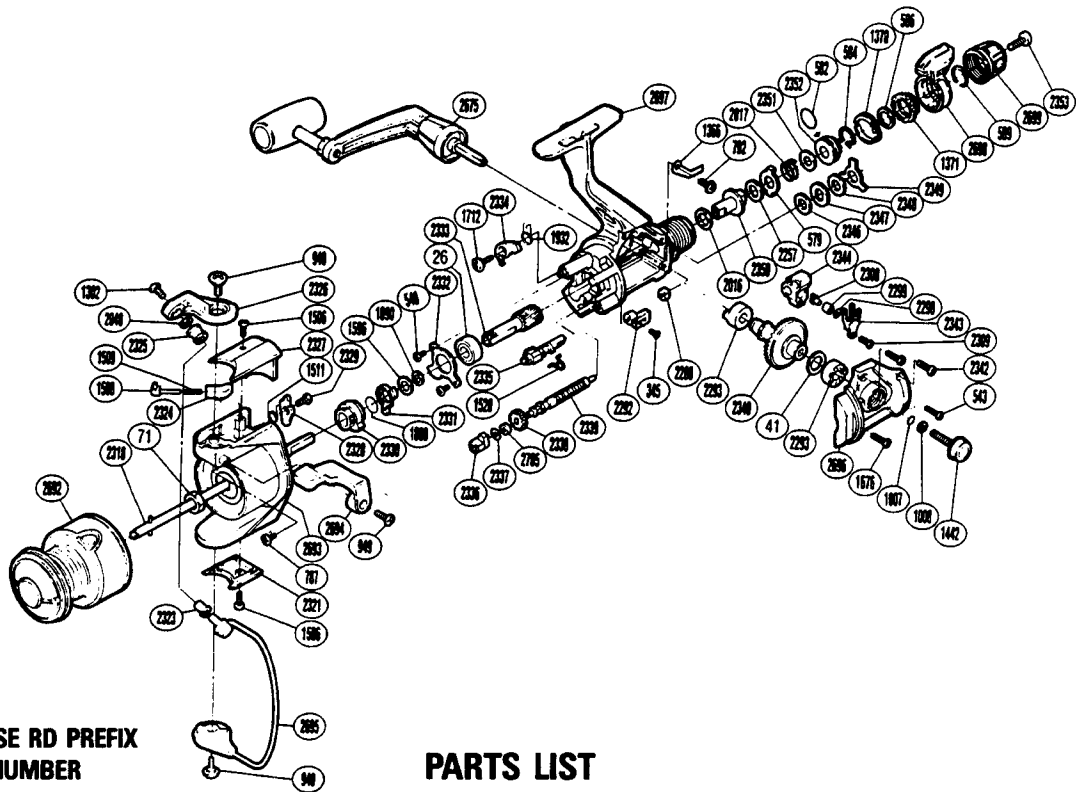
**BA AERO**

**6-10<sup>#</sup>**

**SHIMANO**

**1990 REPAIR MANUAL**

Shimano American Corporation, One Shimano D  
Irvine, CA 9271



**TO ORDER: USE RD PREFIX  
WITH PART NUMBER**

**PARTS LIST**

RD #	DESCRIPTION	RD #	DESCRIPTION	RD #	DESCRIPTION
0026	Ball Bearing	1712	Anti-Reverse Pawl Screw	2334	Anti-Reverse Pawl
0041	Drive Gear Washer	1888	Anti-Reverse Lock Out Spring	2335	Anti-Reverse Cam
0071	Rotor Nut	1890	Bushing Washer	2336	Worm Bearing (Front)
0345	Anti-Reverse Lever Screw	1932	Anti-Reverse Pawl Spring	2337	Worm Shaft Spacer
0540	Anti-Reverse Pawl Screw	2016	Drag Washer "H2" (White)	2338	Idle Gear
0543	Side Cover Screw (B)	2017	Drag Coil Spring	2339	Worm Shaft
0579	Eared Washer "B"	2048	Line Roller Washer	2340	Drive Gear
0582	"O" Ring	2257	Drag Washer "H1"	2342	Side Cover Screw (B)
0584	Hold Click Spring	2288	Worm Bearing	2343	Oscillating Slider Retainer
0586	Fightin' Pressure Screw Washer	2292	Anti-Reverse Lever	2344	Oscillating Slider
0589	Lever Hold Spring	2293	Drive Gear Bushing	2346	Drag Washer "C2" (White)
0787	Nut Lock Screw	2298	Spacer	2347	Click Gear
0792	Bearing Retainer Screw	2299	Oscillating Slider Bushing	2348	Drag Washer (C1)
0940	Bail Trip Cam Screw	2300	Oscillating Pawl	2349	Eared Washer "BF"
0949	Trigger Screw	2309	Slider Retainer Screw	2350	Drag Shaft
1007	Lock Washer Retainer	2318	Main Shaft	2351	Drag Spring Washer
1008	Handle Lock Washer	2321	Rotor Side Cover	2352	Pressure Screw
1302	Line Roller Screw	2323	Line Roller Bushing	2353	Drag Programmer Screw
1366	Drag Click	2324	Bail Spring Guide (B)	2675	Handle Assembly
1370	Lever Click Gear	2325	Sic Ceramic Roller	2692	Spool Assembly
1371	Fightin' Pressure Screw	2326	Arm Cam	2693	Rotor
1442	Handle Screw Cap	2327	Bail Spring Cover	2694	Quick-Fire II Trigger
1506	Bail Spring Cover Screw	2328	Bail Trip Lever	2695	Bail Assembly
1508	Bail Spring Guide A	2329	Bail Trip Lever Screw	2696	Side Cover
1509	Bail Spring	2330	Anti-Reverse Ratchet	2697	Body
1511	Lever Spring	2331	Anti-Reverse Lock Out	2698	Fightin' Drag II Lever
1520	Anti-Reverse Cam Spring	2332	Bearing Retainer	2699	Drag Programmer
1596	Bushing Washer	2333	Pinion Gear	2705	Idle Gear Spacer
1676	Side Cover Screw				